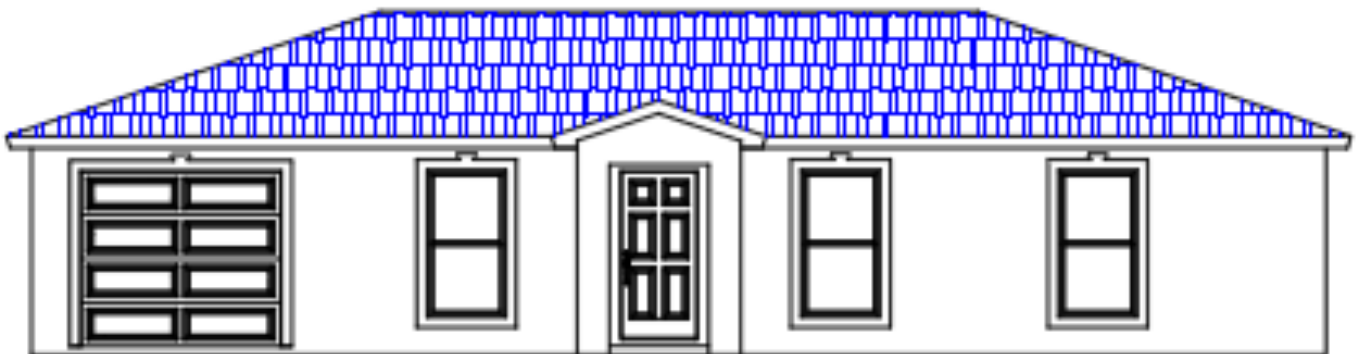


LIVING	1214
GARAGE	242
ENTRY	24
<b>TOTAL</b>	<b>1480</b>



Family Owned & Operated for over 27 years

511 SW Port Saint Lucie Blvd.  
 Port Saint Lucie, FL 34953  
 772-336-7653  
[www.grozahomes.com](http://www.grozahomes.com)  
 LIC CGC023870

Brochures, elevations and floor plans are for illustration purposes only and may vary from actual plans.

